



Golace

THE SINGLE SOLUTION FOR THE RHEUMATOID FOOT

Solace

THE SINGLE SOLUTION FOR THE RHEUMATOID FOOT



OBJECTIVE:

To produce an attractive range of ladies shoes for the Rheumatoid foot.

RESEARCH:

There is a growing body of women experiencing increasing difficulty in finding stylish comfortable footwear due to common foot pathologies. Conditions such as Osteo and Rheumatoid Arthritis are characterised by the destruction of both the osseous and soft tissues of the foot with the metatarsophalangeal joint being most affected. Joint damage and articular changes to the joint structure are the two main causes of shoe induced foot pain, requiring wider fitting shoes to accommodate the broadening forefoot.

HAV (Hallux Abducto-Valgus) and LPSD (Lateral Plantar Sesamoid Displacement) are the two major footwear fitting issues experienced by women requiring a need to accommodate the widening of the forefoot associated with HAV development. Women with shoe fitting problems due to forefoot pathology often seek medical intervention. If a surgical correction option is not available, extra wide footwear is often prescribed. However there are difficulties with the aesthetics and wearer acceptance of prescribed footwear.

In a study by Williams, Rome and Nester 2006, 80 patients were recruited for footwear provision and assessment of compliance. Ten patients refused the footwear outright with a further 34 patients withdrawing from the trial. This trial indicates the challenge faced by footwear designers and manufacturers, in that, footwear that is designed to fit the pathological foot is often rejected as being too big, too bulky and too ugly. The non-compliance to footwear prescription is now commonly referred to as "shoes in the cupboard" syndrome.

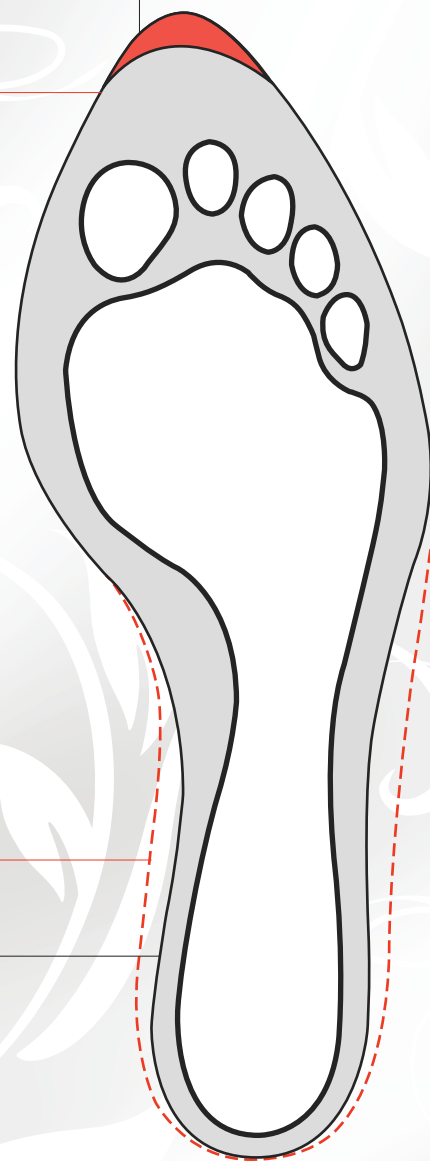
With intelligent aesthetic last design, Reed Medical introduce their new Solace last with the forepart width of our existing last but with a narrow heel and waist to hold the foot securely. The abduction of the 1st met allows the toe shape to be narrower giving a more aesthetic appearance and due to the fact that 90% of RA foot problems are in the forefoot, this allows for a narrow seat and waist enabling the design of a more appealing shoe. The issue with women's problematic footwear is the conflict between the shape of the foot and the shape of the shoe. Incompatible shoe/foot shapes create pressure on joints and increased levels of discomfort. The shape of the shoe is dependent on the shape of the last. The Solace last has been modified to increase levels of comfort.

Solace last extension

Usual last length

Usual waist and seat

Solace waist and seat



NEW FEMININE LEATHERS HAVE BEEN USED IN 7 STYLISH PEARLISED FINISHES, 5 MUTED SATIN FINISH LEATHERS AND SILVER SPLASHED SUEDE TEAMED WITH GOLD AND SILVERS TO CREATE BEAUTIFUL CASUAL SHOES.

- Feminine styling
- Lightweight ultra-soft leather in pearl and satin finishes
- Extended opening for comfort and ease of donning
- Strong heel stiffeners for a secure hold
- Superplush anti-bacterial foam backed lining
- Leather stacked heels with flexible hard wearing rubber sole on the Brogue
- Lightweight EVA wedge sole unit on the casuals and whole-cut styles.

INSOLE

The Solace last accommodates the inclusion of an insole to provide cushioning and pressure reduction under the metatarsal heads. The cushioning is required to compensate for the degradation of the met joint tissues and alleviate the feeling of 'walking on marbles'.

The insole consists of 6mm soft, slow rebound material that redistributes pressure around the foot's plantar surface providing enhanced cushioning whilst moulding itself to the contours of the foot giving optimum comfort and stability.

A 3mm met bar is then added to complete the required depth and support manufactured from a high performance polyurethane product with excellent shock absorbing properties, excellent resistance to compression and superior durability. The Anti-microbial, anti-fungal deodorising, abrasion resistant Superplush completes this comfortable cushioned insole.

The justification for an asymmetrical insole for the rheumatoid foot is that it benefits from increased levels of cushioning. However, the amount of cushioning required at different parts of the foot to achieve a high level of comfort is variable. The perceptive last design accommodates this variety of insole depth.

- Provides advanced protection against pressure points
- Long term softness and flexibility
- Prevents excess stress to the foot
- Conforms to the individual foot
- Cushioned for pressure reduction
- Durable and long-lasting

AVAILABLE COLOURS/FINISHES



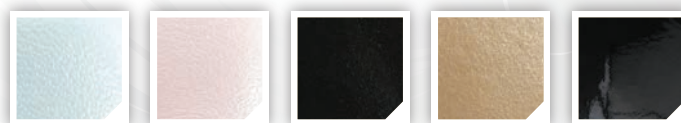
Black
Pearl

White
Pearl

Red
Pearl

Magenta
Pearl

Beige
Pearl



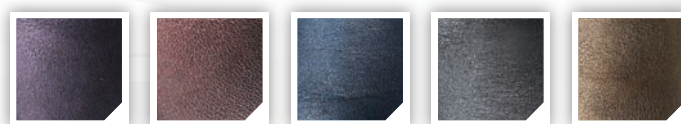
Soft Blue
Pearl

Soft Pink
Pearl

Black
Nubuk

Gold
Patent

Black
Patent



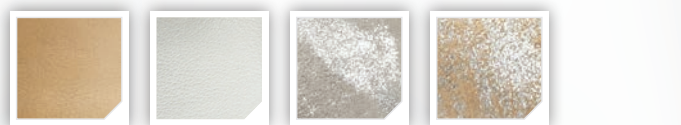
Violet
Satin

Burgundy
Satin

Navy
Satin

Charcoal
Satin

Copper
Satin



Beige

Soft
Grey

Metallic
White Silver
Suede

Metallic
Gold Silver
Suede

Tie fastening footwear will be supplied with both laces and ribbon.

All footwear as illustrated in this catalogue will be accepted for return as per our current Terms and Conditions. Any other colour combination will be non-returnable. Refer to main brochure/website for Terms and Conditions.

Whilst every effort has been made to reproduce the colour samples as accurately as possible, the limitations of the printing process may result in the actual colours differing slightly from those shown in this catalogue.



PATRICIA

A classic court shoe with clipped in heel and midfoot and latched strap which holds the foot securely.

AVAILABLE IN : Lace only

SHOWN IN : Copper Satin



CHRISTINE

Extended opening shoe shown with narrow return straps.

AVAILABLE IN : Lace or Velcro

SHOWN IN : Navy Satin





CAROL

A brogue punch gillie shoe with tie fastening and leather stacked heel.

AVAILABLE IN : lace only

SHOWN IN : Beige Pearl



JEAN

An extended opening shoe with tie fastening and EVA wedge sole unit.

AVAILABLE IN : Lace or Velcro

SHOWN IN : Black Suede/Patent



Solace



LINDA

A classic brogue with extended opening for easy donning with leather stacked heel and flexible rubber outsole.

AVAILABLE IN : Lace or Velcro

SHOWN IN : Black Pearl



ANGELA

A traditional court shoe with deep vamp depth covering the hallux ensuring a comfortable fit. A threaded ribbon enables attachment of buckle trim (not included) purchased separately from www.shoestring.co.uk

AVAILABLE IN : Velcro only

SHOWN IN : Violet Satin





SHARON

Leisure shoe with stud detail decoration in soft patent leather & suede combination.

AVAILABLE IN : Lace or Velcro

SHOWN IN : Gold Patent / Gold Silver Suede



TRACEY

Soft and comfortable leisure shoe in a leather and suede combination.

AVAILABLE IN : Lace or Velcro

SHOWN IN : White Pearl/White Silver Suede



NICOLA

Pearl leather trainer with through wedge trainer sole.

AVAILABLE IN : Lace or Velcro

SHOWN IN : White Pearl/Red Pearl

